

**HMGCS2 Antibody**  
**Rabbit mAb**  
**Catalog # AP92555****Specification**

---

**HMGCS2 Antibody - Product Information**

Application	WB, IHC
Primary Accession	<a href="#">P54868</a>
Reactivity	Rat
Clonality	Monoclonal
<b>Other Names</b>	
HMG CoA synthase; HMGCS2;	
Isotype	Rabbit IgG
Host	Rabbit
Calculated MW	56635 Da

**HMGCS2 Antibody - Additional Information**

Dilution	WB~~1:1000 IHC~~1:100~500
Purification	Affinity-chromatography
Immunogen	A synthesized peptide derived from human HMGCS2
Description	This enzyme condenses acetyl-CoA with acetoacetyl-CoA to form HMG-CoA, which is the substrate for HMG-CoA reductase.
Storage Condition and Buffer	Rabbit IgG in phosphate buffered saline , pH 7.4, 150mM NaCl, 0.02% sodium azide and 50% glycerol. Store at +4°C short term. Store at -20°C long term. Avoid freeze / thaw cycle.

**HMGCS2 Antibody - Protein Information****Name** HMGCS2**Function**

Catalyzes the first irreversible step in ketogenesis, condensing acetyl-CoA to acetoacetyl-CoA to form HMG-CoA, which is converted by HMG-CoA reductase (HMGCR) into mevalonate.

**Cellular Location**

Mitochondrion {ECO:0000250|UniProtKB:P22791}.

**Tissue Location**

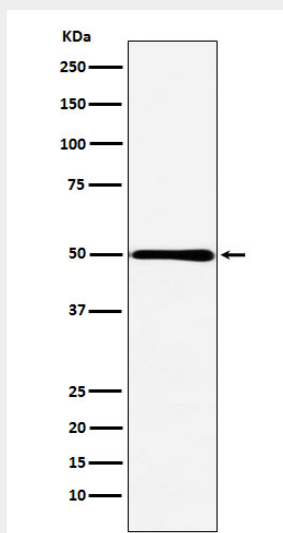
Expression in liver is 200-fold higher than in any other tissue. Low expression in colon, kidney, testis, and pancreas Very low expression in heart and skeletal muscle (PubMed:16940161, PubMed:21952825, PubMed:7893153). Not detected in brain (PubMed:21952825).

## HMGC2 Antibody - Protocols

Provided below are standard protocols that you may find useful for product applications.

- [Western Blot](#)
- [Blocking Peptides](#)
- [Dot Blot](#)
- [Immunohistochemistry](#)
- [Immunofluorescence](#)
- [Immunoprecipitation](#)
- [Flow Cytometry](#)
- [Cell Culture](#)

## HMGC2 Antibody - Images



Western blot analysis of HMGC2 expression in Caco-2 cell lysate.